



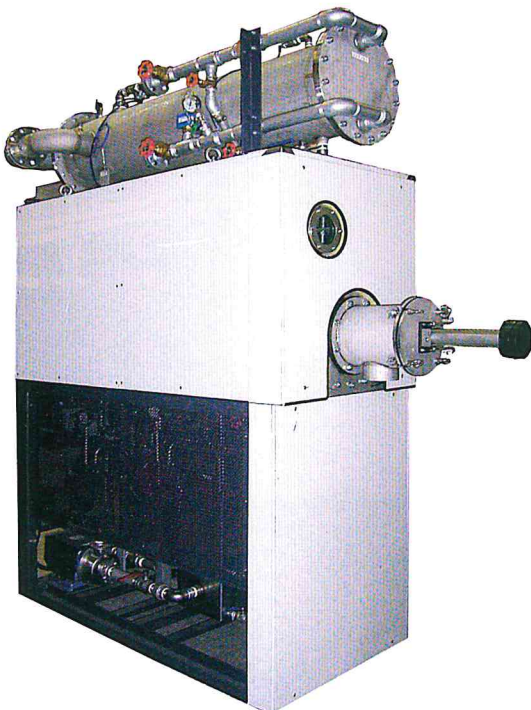
Pursuing the goal of zero emissions

Take-GEN

Decompression-Dehydration-Drying Device

Proposal for "Simplification"

To achieve "Zero-Discharge" – To pursue Simplification



Automatically operation in both "Batch-Operation" type and "Continually-Operation" Type.

Motor part is pump only and maintenance free.
Pre-treatment is no need for sludge eighter.

Only 1.0sqm is requested to dehydrate 100L per hour.

The 360-liter level tank which equipped to the large heat-exchange area of the device, successfully allows the machine to operate under a low temperature, and meantime provides a great space efficiency.

Possible to reduce the moisture content to 1-10% after treatment.

Moisture rate could also be customized during "Batch-Operation" type. This achievement improves not only waste disposal cost reduction, but also enlarge the wastewater recycling range.

Designed to reduce the odor and noise.

Sealing structure shuts the odor out, and the sound during operating only comes from the motor.

Measurement unit addition.

Trough measurement unit addition, concentration rate can be set freely, treatment result be raised efficiently.

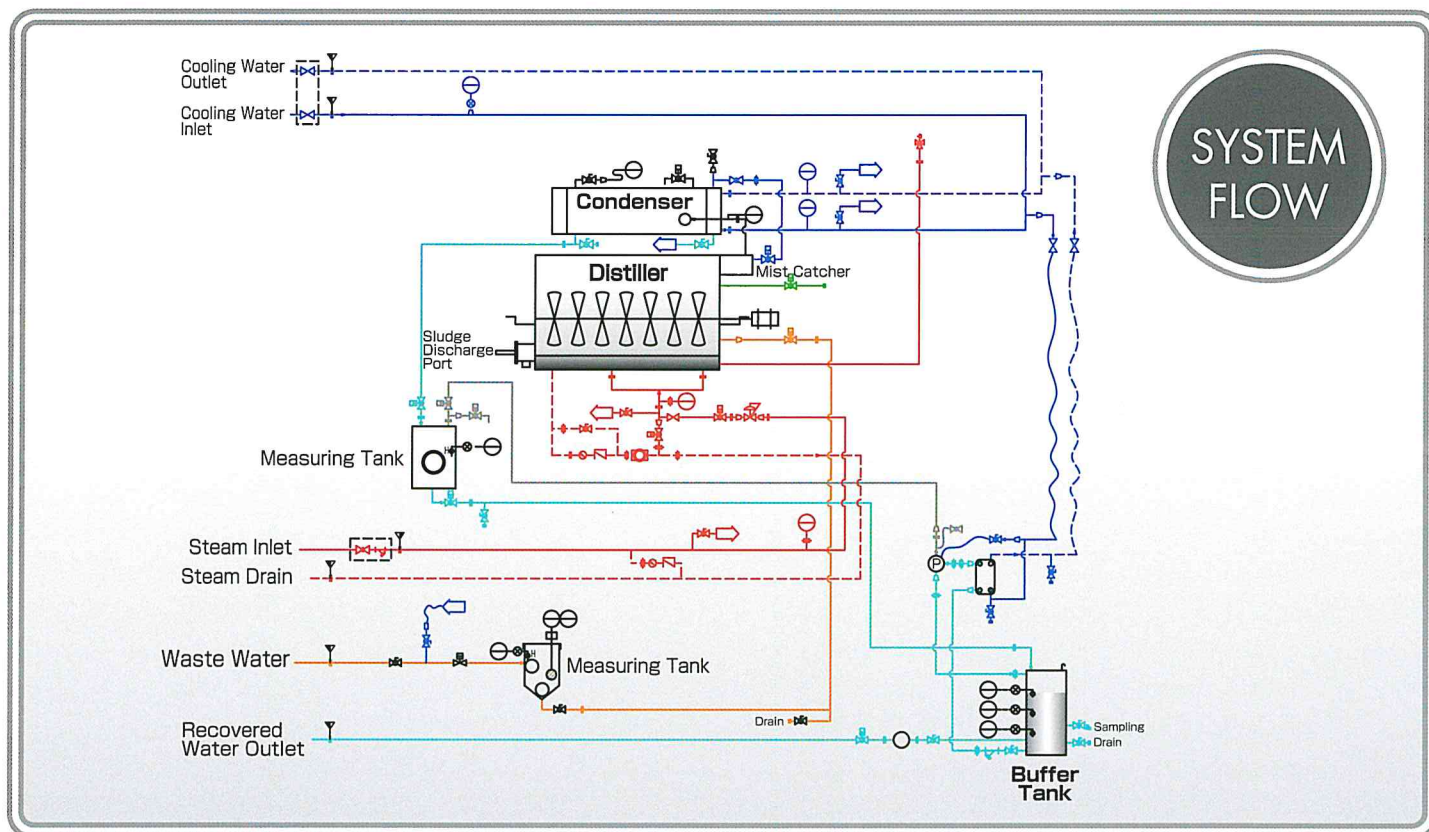
Self/Automatic-cleaning function.

Working efficiency be improved due to treatment tank automat-cleaning function.

Registration of utility model

This device is designed to dehydrate·purging·drying the waste water and meantime the sludge.
Using this device and its various of operation type, to achieve waste disposal cost reduction, wastewater recycling, and ECO friendly.

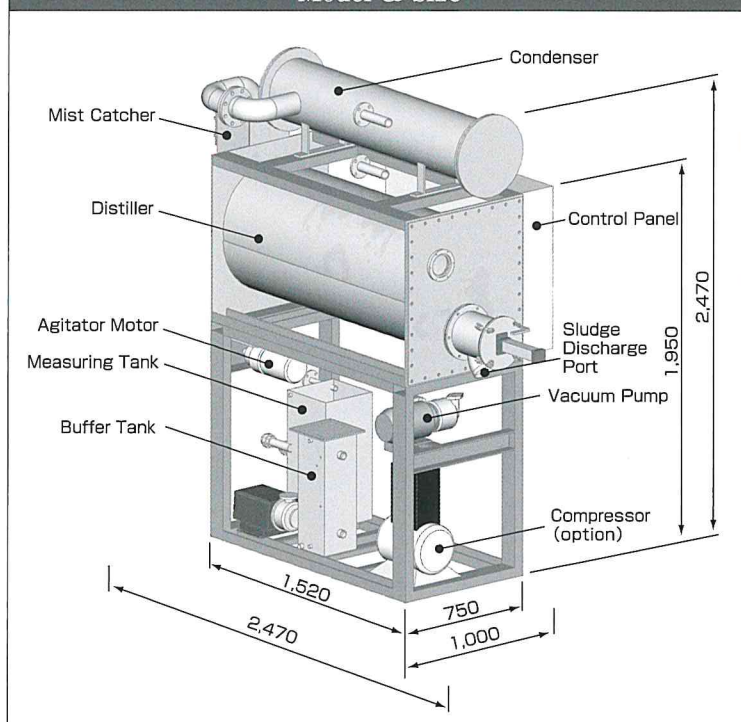
Simple Design for Dehydration and Drying Creates High Efficiency



Spec

Model	Take-GEN 100 Type	
Water evaporation capacity	Max 100L/h	
Processing object	Waste water	
Power supply	φ3 200V 50/60Hz ※ Conditions can be changed.	
Power consumption	3.65kW	
Cooling water	Flow rate	200L/min
	Inlet temperature	32°C or Less
	Required cooling capacity	68.7kW
Steam	Required amount	100kg/h
	Supply pressure	0.3 ~ 0.8MPa
Instrument air	Supply pressure	0.5 ~ 0.7MPa
Connection	Waste water inlet	32A
	Recoverd water outlet	25A
	Cooring water inlet	40A
	Cooring water outlet	40A
	Steam inlet	20A
	Steam drain outlet	20A
Size	W1000×D2470×H2470	
Dry weight	1600kg	

Model & Size



Environmental protection



TAKE-GEN Co., Ltd.

5-8-6 Minamiokajima, Tisho-ku, Osaka-city, 551-0021 Japan

PHONE +81-6-4394-5008 TELEFAX +81-6-4394-5009

<http://www.take-gen.com>

E-mail: info@take-gen.com

The functional specification is subject to change in future without prior notice.